

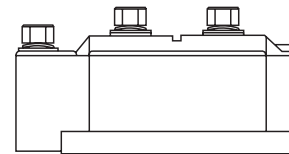
### 特点

- 1). 芯片与底板电气绝缘, 2500V交流电压
- 2). 全压接结构, 优良的温度特性和功率循环能力
- 3). 体积小,重量轻

### 典型应用

- 1). 交直流电机控制
- 2). 各种整流电源
- 3). 变频器

|             |                         |
|-------------|-------------------------|
| $I_{F(AV)}$ | 800A                    |
| $V_{RRM}$   | 600~1800V               |
| $I_{FSM}$   | $15 A \times 10^3$      |
| $I^2t$      | $1150 A^2S \times 10^3$ |



### 主要参数

| 符号            | 参数         | 测试条件  | 结温              | 参数值  |      |       | 单位                 |
|---------------|------------|---|-----------------|------|------|-------|--------------------|
|               |            |   | $T_j(^\circ C)$ | 最小   | 典型   | 最大    |                    |
| $I_{F(AV)}$   | 正向平均电流     | $180^\circ$ 正弦半波, 50Hz, 单面散热, $T_c=100^\circ C$ | 150             |      |      | 800   | A                  |
| $I_{F(RMS)}$  | 方均根电流      |   | 150             |      |      | 1256  | A                  |
| $V_{RRM}$     | 反向重复峰值电压   | $V_{RRM}$ tp=10ms, $V_{RSM} = V_{RRM} + 200V$   | 150             | 600  |      | 1800  | V                  |
| $I_{RRM}$     | 反向重复峰值电流   | $V_{RM} = V_{RRM}$                              | 150             |      |      | 45    | mA                 |
| $I_{FSM}$     | 正向不重复浪涌电流  | 10ms底宽, 正弦半波, $V_R = 0.6V_{RRM}$                | 150             |      |      | 18.0  | KA                 |
| $I^2t$        | 浪涌电流平方时间积  |   |                 |      |      | 1650  | $A^2s \times 10^3$ |
| $V_{FO}$      | 门槛电压       |   | 150             |      |      | 0.75  | V                  |
| $r_F$         | 斜率电阻       |   |                 |      |      | 0.33  | m $\Omega$         |
| $V_{FM}$      | 正向峰值电压     | $I_{FM} = 2400A$                                | 25              |      |      | 1.80  | V                  |
| $R_{th(j-c)}$ | 热阻抗(结至散热器) | $180^\circ$ 正弦半波, 单面散热                          |                 |      |      | 0.080 | $^\circ C / W$     |
| $V_{iso}$     | 绝缘电压       | 50Hz, R.M.S, t=1min, $I_{iso}: 1mA(max)$        |                 | 2500 |      |       | V                  |
| $F_m$         | 安装扭矩(M12)  |   |                 |      | 14   |       | N·m                |
|               | 安装扭矩(M8)   |   |                 |      | 12   |       | N·m                |
| $T_{stg}$     | 贮存温度       |   |                 | -40  |      | 125   | $^\circ C$         |
| $W_t$         | 质量         | 外形为601F   |                 |      | 3500 |       | g                  |
| Size          | 包装盒尺寸      | 160 × 75 × 80 (1只装)                             |                 |      |      |       | mm                 |

性能曲线图

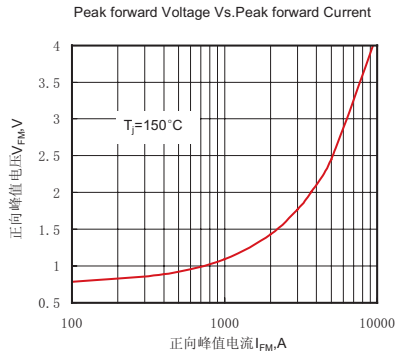


Fig.1 正向伏安特性曲线

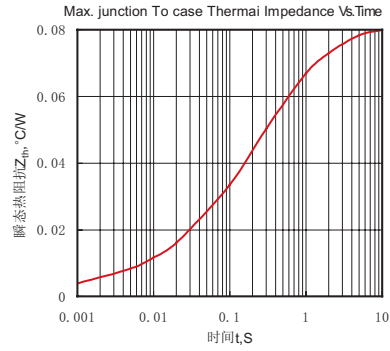


Fig.2 瞬态热阻抗曲线

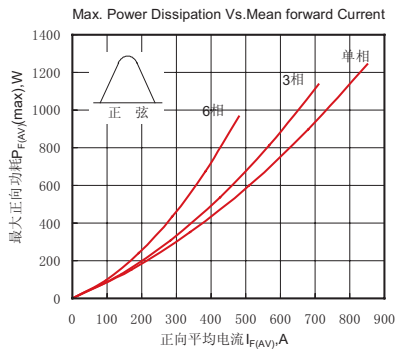


Fig.3最大正向功耗与平均电流的关系曲线

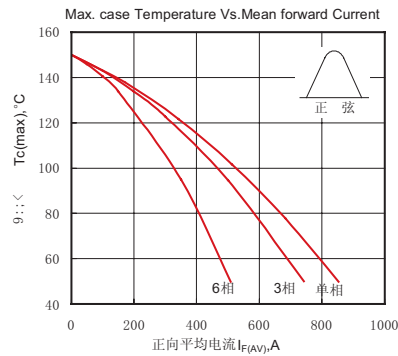


Fig.4管壳温度与正向平均电流的关系曲线

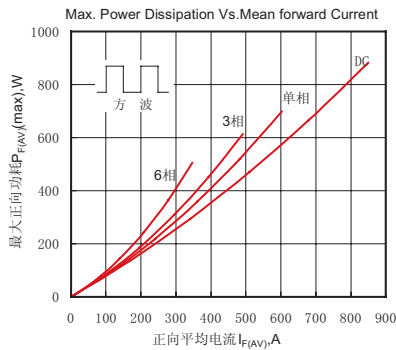


Fig.5最大正向功耗与平均电流的关系曲线

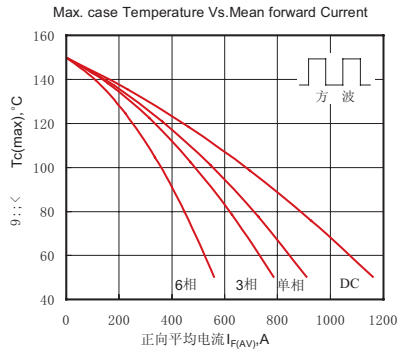


Fig.6管壳温度与正向平均电流的关系曲线

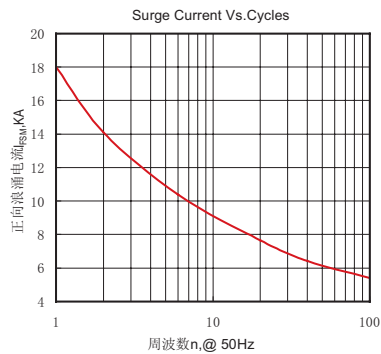


Fig.7 正向浪涌电流与周波数的关系曲线

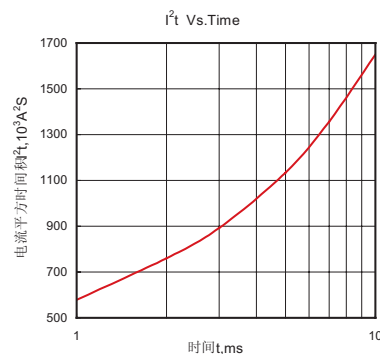
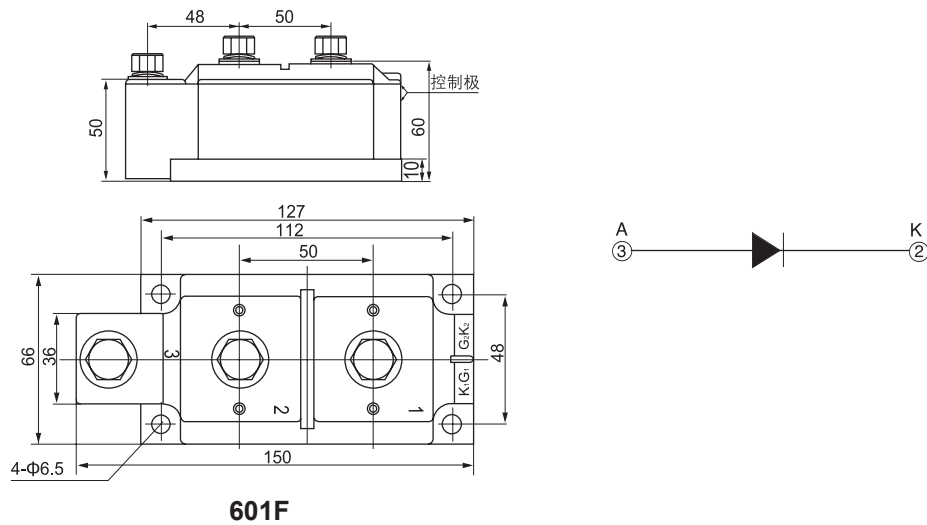


Fig.8 I<sup>2</sup>t特性曲线

外形尺寸图



**YUEQING LIUJING RECTIFIER CO., LTD**

Sale Department: Liujing Building, Yueqing City,  
Zhejiang Province

Add: Wanao Industrial Zone, Yueqing city,  
Zhejiang Province

Tel: 0086-577-62519692    0089-577-62519693

Fax: 0086-577-62518692

International Export: 0086-577-62571902

Technical Support: 0086-15868768965

After Service: 400-6606-086

<http://www.china-liujing.com>

<http://www.liujingdianqi.cn>

<http://www.cnrectifier.com>

<http://www.cnthyristor.com.cn>

MSN: thristors@hotmail.com

**打造最具竞争力的电力半导体产品**

To be the most competitive Power Semiconductor  
Devices manufactory.

LIUJING reserves the right to change limits, test conditions and dimensions.

윤정은 이 칼타로그 중에 데이트, 테스트 조건, 외형사이즈에 대한 최종 해석권을 가지고 있습니다.